

StroboStomp Mini Plastic LCD Cover Replacement

Before anything, make sure you are wearing gloves to avoid leaving any fingerprints or smudges on the LCD and LCD cover



Remove the 4 screws from the back of the pedal.



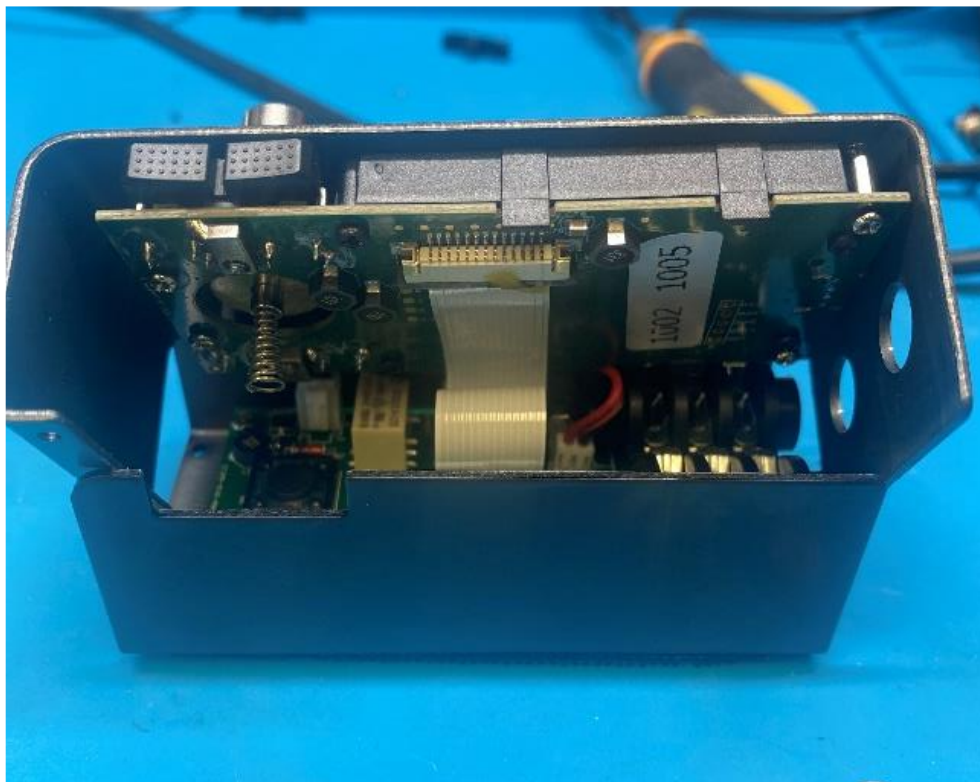
StroboStomp Mini Plastic LCD Cover Replacement

Before anything, make sure you are wearing gloves to avoid leaving any fingerprints or smudges on the LCD and LCD cover

Using a 7/16 nut driver or similar tool, unscrew the nuts from the chassis.



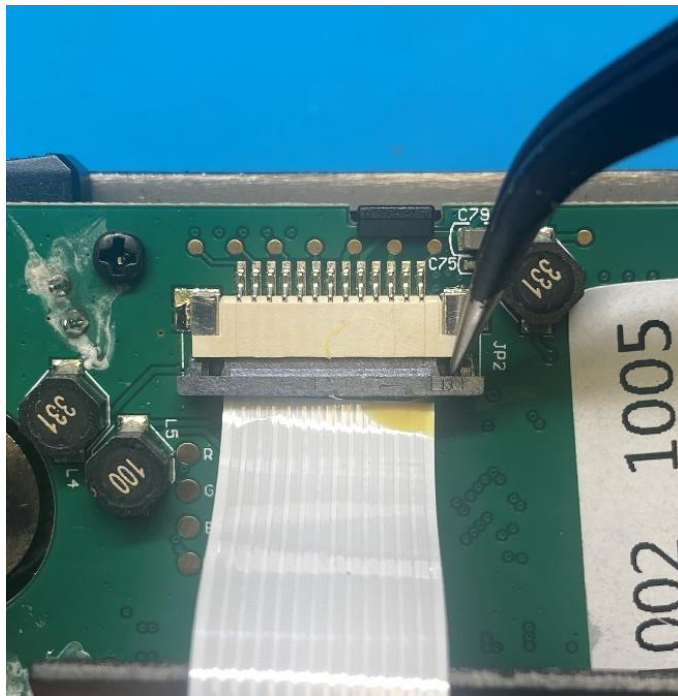
With the screws and nuts removed, you should be able to carefully lift the LCD board.



StroboStomp Mini Plastic LCD Cover Replacement

Before anything, make sure you are wearing gloves to avoid leaving any fingerprints or smudges on the LCD and LCD cover

Remove the glue and push out the release pin for the ribbon connector.



Remove the 4 silver screws from the LCD board and carefully lift the board up.



StroboStomp Mini Plastic LCD Cover Replacement

Before anything, make sure you are wearing gloves to avoid leaving any fingerprints or smudges on the LCD and LCD cover

Using a sharp knife or plastic spudger, carefully remove the plastic screen cover and be carefully not to damage the actual display. Carefully clean excess adhesive off and avoid damagin the display.



Once removed, carefully take the new screen cover and place it as accurately as possible since it will need to fit back into the chassis.